

MPS Catalog Number:

S1 90 80 054 MX AL 035

Date:

01/24/2014

END FITTINGS

Tower End Fitting:

Eye (Forged Steel)

Line End Fitting:

Ball (Forged Steel) (ANSI 52-5)

MATERIAL

Corona Ring (Tower):

None

Corona Ring (Line):

None

Corona Rings are recommended for applications of 230 kV and above

Number of Sheds:

17 large 18 standard

Rod Diameter:

16 mm

Weight Estimate:

11.1 lbs 5.1 kg

DIMENSIONAL VALUES

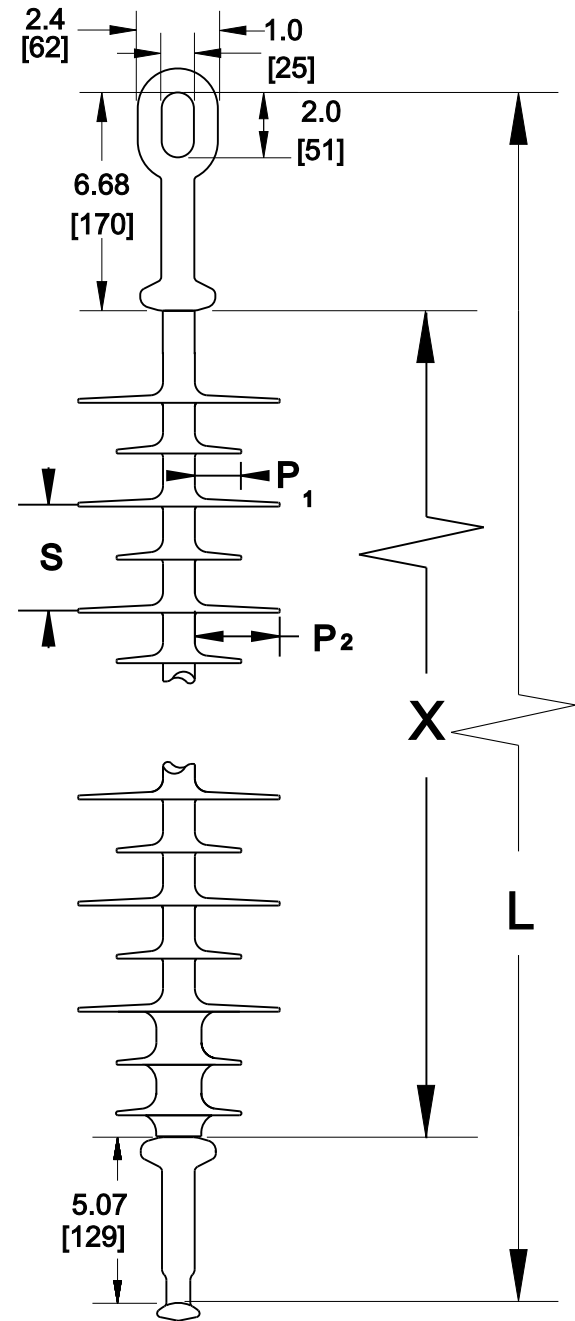
Section Length (L):	66.2 in	1,681 mm
Rubber Length (X):	54.4 in	1,382 mm
Standard Shed Height (P1):	1.5 in	38 mm
Large Shed Height (P2):	2 in	51 mm
Projection Ratio (S/P):	-	1.5
Shed Spacing (S):	3 in	76 mm
Dry Arc Distance:	56.7 in	1,440 mm
Leakage Distance:	158.4 in	4,023 mm

ELECTRICAL VALUES

60 Hz Dry Flashover:	554 kV	Min. Withstand:	510 kV
60 Hz Wet Flashover:	491 kV	Min. Withstand:	427 kV
Pos. Critical Impulse Flashover:	942 kV	Min. Withstand:	824 kV
Neg. Critical Impulse Flashover:	994 kV	Min. Withstand:	875 kV

MECHANICAL VALUES

Specified Mech. Load (SML):	25,000 lbs	111.2 kN
Routine Test Load (RTL):	12,500 lbs	55.6 kN



Dimensions: inches [millimeters]

Note: Drawing not actual depiction of insulator appearance

Silicone Rubber Sheath & Sheds
Complies with applicable ANSI and IEC standards.